

26 Marshaw Close, Derby, DE3 9SU

£775 PCM


ABODE
SALES & LETTINGS




ABODE

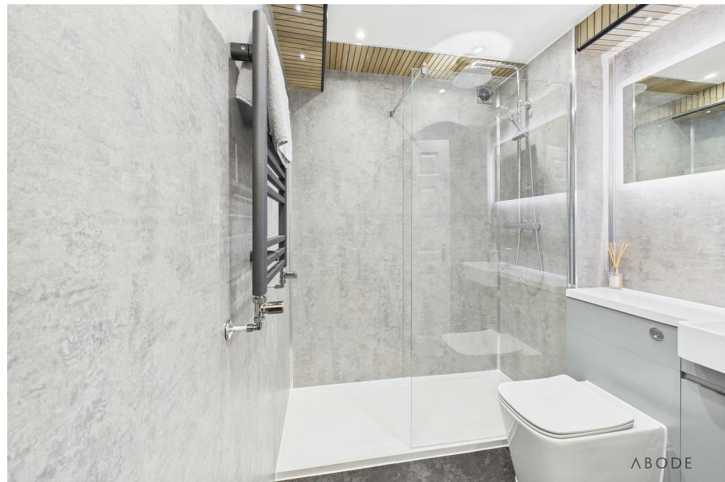


This very well-presented and recently redecorated ground floor apartment offers comfortable and practical living throughout. The accommodation begins with a welcoming entrance hall featuring two generously sized storage cupboards, providing excellent built-in storage.

The bright and spacious lounge/dining area benefits from UPVC double-glazed windows and a door that opens directly onto the south-facing private garden, allowing plenty of natural light and creating a seamless indoor-outdoor living space.

The property includes a well-proportioned double bedroom complete with fitted wardrobes, along with a modern shower room finished to a good standard.

Externally, the apartment enjoys its own private garden, a driveway providing off-road parking, and a single garage, offering both convenience and security.

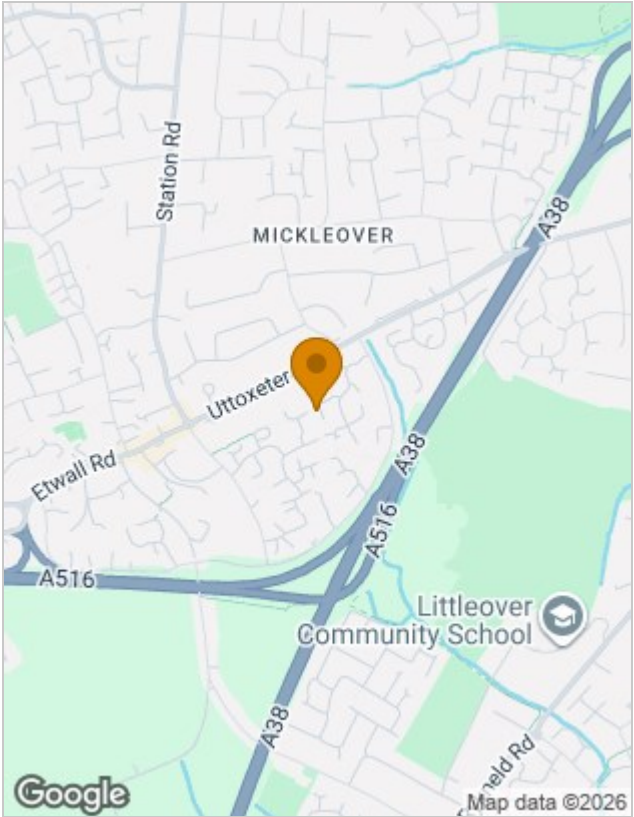




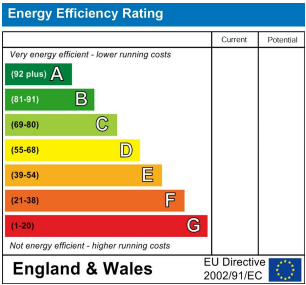
Floor Plans



Location Map



Energy Performance Graph



Please contact our Burton Lettings Office on 01283 845888 if you wish to arrange a viewing appointment for this property or require further information.

The particulars are set out as a general outline only for the guidance of intended purchasers or lessees, and do not constitute, any part of a contract. Nothing in these particulars shall be deemed to be a statement that the property is in good structural condition or otherwise nor that any of the services, appliances, equipment or facilities are in good working order. Purchasers should satisfy themselves of this prior to purchasing.